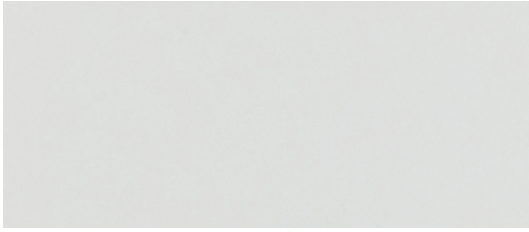


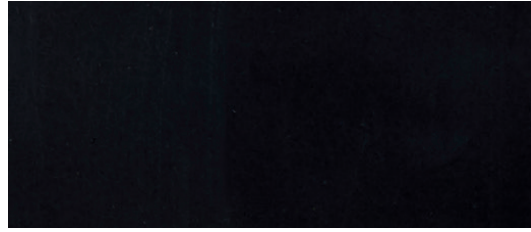
viccarbe

Finishes

COLOR RANGE - LACQUERED WOODS



White | RAL 9003



Black | RAL 9005



Taupe | RAL 1019



Brick | RAL 050 50 30



Ochre | RAL 1011



Military Green | RAL 090 40 30



Dusty Pink | RAL 060 70 20



Dusty Green | RAL 7034

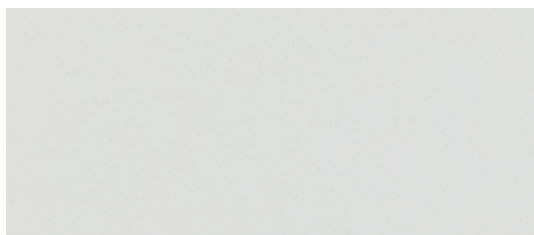


Bronze



Orange | RAL 2005

COLOR RANGE - METAL FINISHES*



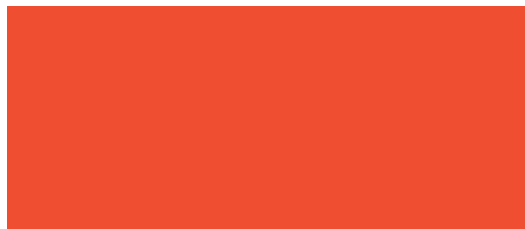
White | RAL 9003



Black | RAL 9005



Taupe | RAL 1019



Orange Fluor | RAL 2005



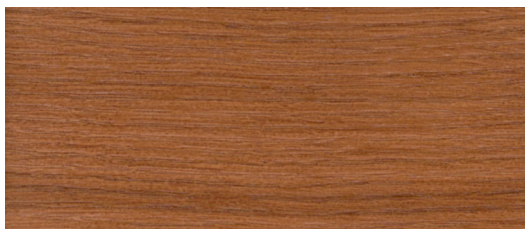
Brass

** Please check on the Price
List the colors and textures
available for each product.*

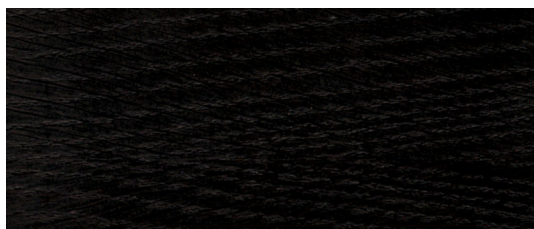
STAINED WOODS



Matt Oak



Cognac



Ash

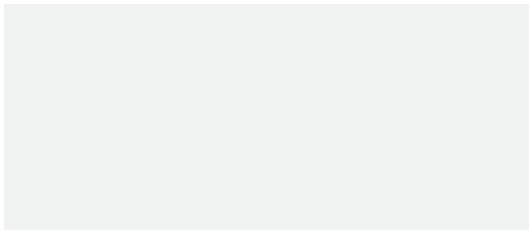


Wenge



White

COLOR RANGE - POLYPROPYLENE*



White | RAL 9003



Black | RAL 9005



Sand | NCS 3005 Y50R



Dusty Green | NCS 4010 G70T



Yellow Ochre | RAL 070 60 40



Brick | RAL 050 50 30

**Only available for
Maarten Plastic*

TABLE TOPS*



MDF with HPL,
Stained Edge



Low Pressure Laminate,
White Edge



Compact Laminate,
White Edge



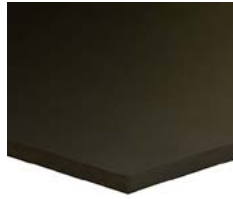
Compact Laminate,
Black Edge



MDF with HPL,
Stained Edge



Low Pressure Laminate,
Black Edge



Compact Laminate,
Black Edge

**The thickness of these pictures may not correspond with the specific thickness of each table top (which depends on the model).*