

**viccarbe**

## Finishes — Woods & Metals

---

## STAINED WOODS

---



Matt Oak



Cognac



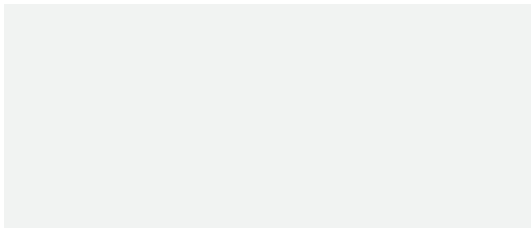
Ash



Wenge

## COLOR RANGE - LACQUERED WOODS

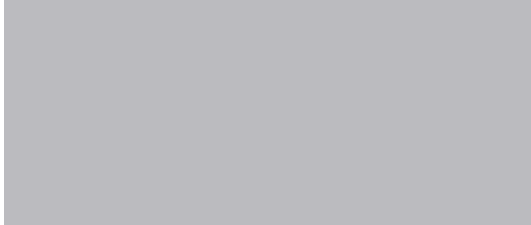
---



White | RAL 9003



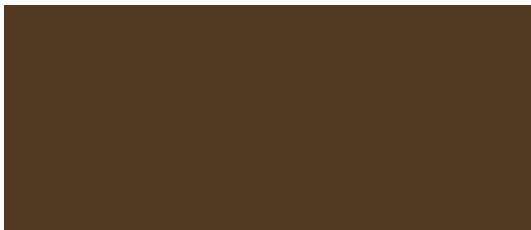
Black | RAL 9005



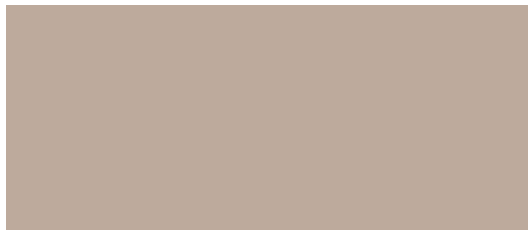
Grey | RAL 7004



Sand | NCS3005Y50R



Tobacco | RAL 8028



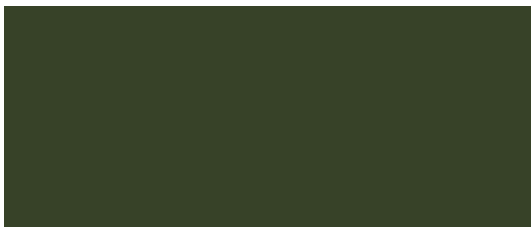
Smoke | RAL 1019



Silver | RAL 9006



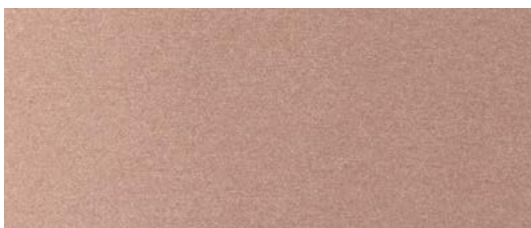
Mustard | RAL 1012



Green | RAL 6007



Blue | RAL 5024



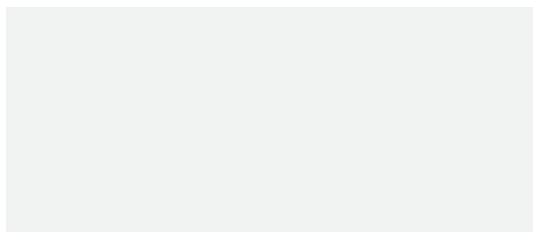
Bronze



Red | RAL 3001

**COLOR RANGE - LACQUERED WOODS - HIGH GLOSS\***

---



White | RAL 9003



Black | RAL 9005



Smoke | RAL 1019



Green | NCS2060J7Y

**COLOR RANGE - LACQUERED WOOD - FLUOR\***

---



Orange | RAL 2005

*\* Only available for Shape  
\*\* Please check on the  
Price List the colors and  
textures available for  
each product.*

**TABLE TOPS\***

---



MDF with HPL,  
Stained Edge



Low Pressure Laminate,  
White Edge



Compact Laminate,  
White Edge



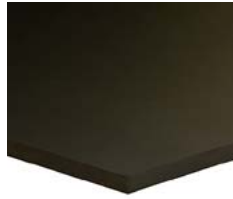
Compact Laminate,  
Black Edge



MDF with HPL,  
Stained Edge



Low Pressure Laminate,  
Black Edge

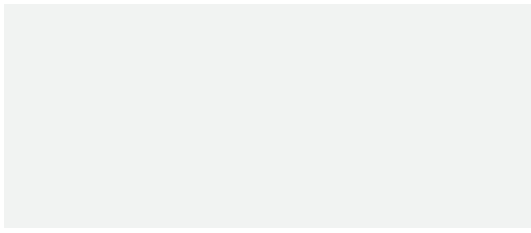


Compact Laminate,  
Black Edge

*\*The thickness of these pictures may not correspond with the specific thickness of each table top (which depends on the model).*

**COLOR RANGE - METAL FINISHES\***

---



White | RAL 9003



Black | RAL 9005



Sand | RAL 1019



Red | RAL 3002



Altea Blue | RAL 5000



Orange Fluor | RAL 2005



Mustard | RAL 1012



Silver\*\* | RAL 7004



Brass

*\*Please check on the Price List the colors and textures available for each product.  
\*\*Microtexturized Silver (RAL 7004) only available for the structure of Stan table.*